

# NIHAL<sup>®</sup>

Stainless Steel Kitchen Sink

Simply Fine  
Design



A  
quality  
kitchen  
sink





## Company Profile

Laxmi Steel is a young & Advance Stainless Steel Kitchen Sink Company, started in brand NIHAL. NIHAL sinks and basins are designed and manufactured with the best quality stainless steel, Which retain luster and finesse for years in toughest of condition, just like diamonds. Moreover, steel sinks and wash-basins are precisely noise free, adding peace to a much chaotic kitchen otherwise-

“All that’s really worth doing, is what we do for other” , and here at NIHAL, It’s ;most reliable sink brand that is exactly what we do, With uncompromising quality and boundless innovative drive, our commitment is to our customer out there, because to us, IT IS ALL ABOUT YOU! And our ongoing success is highly dependent on our loyal customers.

Stainless steel sinks and basins form the house of NIHAL are judiciously produced for the modern household and cooking connoisseurs - non rusting, easy to maintain and hygienic. They can easily fit into granite, wood tiles, marble and metal work-tops. NIHAL kitchen sinks and basins are glitzy yet elegant, alluring yet poised, just like the modern woman.





## Single Bowl Sink

MODEL CODE	OVERALL SIZE (Inches)	BOWL SIZE (Inches)
LS-001	12x12x5	10x10
LS-002	12x15x6	10x13
LS-003	14x16x6	12x14
LS-004	18x16x8	16x14
LS-005	18x18x8	Round
LS-006	20x17x8	18x15
LS-007	21x18x8	18x15
LS-008	22x18x9	20x16
LS-009	24x18x9	22x16
LS-010	24x18x10	22x16
LS-011	21x27x9	18x24
LS-012	24x24x10	22x22



## Single Bowl With Drain Board Sink

MODEL CODE	OVERALL SIZE (Inches)	BOWL SIZE (Inches)
LS-101	32x18x8	16x14
LS-102	36x18x8	16x14
LS-103	37x18x8	16x14
LS-104	41x20x8	18x15
LS-105	45x20x9	20x16







## Double Bowl Sink

MODEL CODE	OVERALL SIZE (Inches)	BOWL SIZE (Inches)
LS-201	37x18x8	16x14
LS-202	42x20x8	18x15
LS-203	45x20x9	20x16
LS-204	41x20x9	22x16





## Stainless Steel Wash Basin

MODEL CODE	OVERALL SIZE (Inches)	BOWL SIZE (Inches)
LS-301	16X14	16x14
LS-302	18X12	18x12

## Stainless Steel Indian Toilet Pan

MODEL CODE	OVERALL SIZE (Inches)	BOWL SIZE (Inches)
LS-303	19x23	19x23





### **Stainless Steel Grade**

We use high quality Stainless steel Grade (202&304) which is highly demanded by the customer's

### **Stainless Thickness**

NIHAL Sinks are manufactured with steel thickness 1mm. it prevents denting & noise pollution. So NIHAL sink looks very heavy.

### **Finish**



### **Gloss Finish**

NIHAL Sinks are having best quality Chrome finishing They are looking very shining, looks like a mirror

### **Matt Finish**



NIHAL Sinks are also available in Matt finishing. They maintained the durability lifetime.



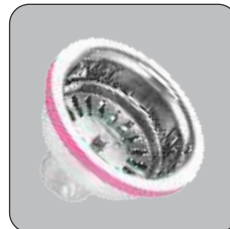
### **Plast Care**

NIHAL sinks are provided with special plastic lamination, which protects the sink from scratches and wear & tear, during installation.



### **Sound Deadening Pad**

It reduces of utensils while washing.



### **3"/4" Sink Coupling**

NIHAL sinks are having high quality stainless steel sink coupling which is available in 3 inch & 4 inch.



Manufactured by:

**LAXMI STEELS**

**New Delhi**

Email : [laxmisteels2017@gmail.com](mailto:laxmisteels2017@gmail.com)

Web: [www.nihalsinks.com](http://www.nihalsinks.com)